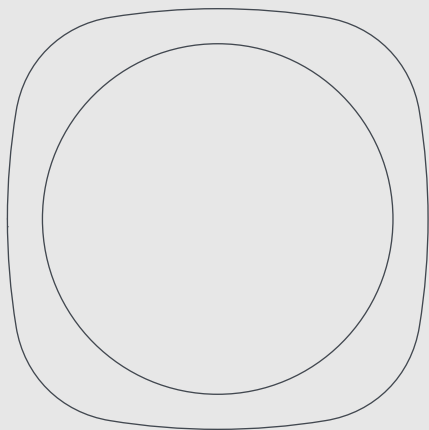


easee



Quick guide

Equalizer

THIS DOCUMENT CONTAINS INFORMATION THAT IS SUBJECT TO CHANGE WITHOUT NOTICE.

The latest version of this publication can be downloaded at <http://easee.support>

No part of this publication may be reproduced or transmitted in any form or by any means, electronic or mechanical, including, but not limited to, copying, recording, retrieving data, or computer networks without the written permission of Easee AS.

Easee and all other Easee product names and slogans are trademarks or registered trademarks of Easee AS. Easee products can be protected by one or more patents.

All other products and services mentioned may be trademarks or service marks of their respective owners.

Illustrations of the product and user interface are exemplary and may differ from the actual appearance.

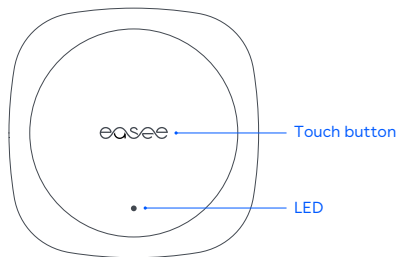
October 2020 - Version 1.01
© 2020 by Easee AS. All rights reserved.

IMPORTANT

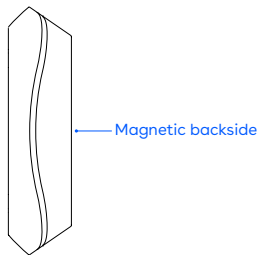
Read carefully before use.
Keep for future reference.

You can find other languages, answers to frequently asked questions and other useful information at **easee.support**.

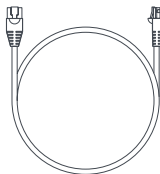
Product overview



Equalizer



(side view)



Cable

Wall mounting kit
(for non-metallic surfaces)



x1

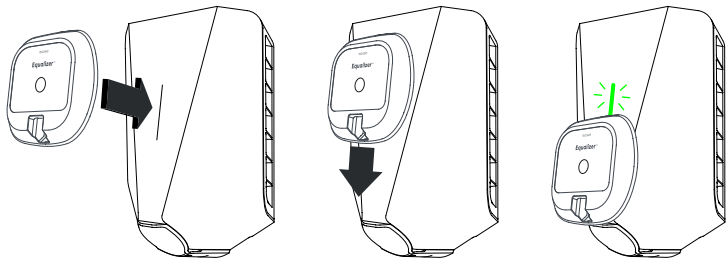


x1

1 Charging Robot Pairing

Before you start: make sure your Easee charger is connected to the same WiFi as you want the Equalizer to connect to. The Equalizer does not need to be connected to a power source during this step.

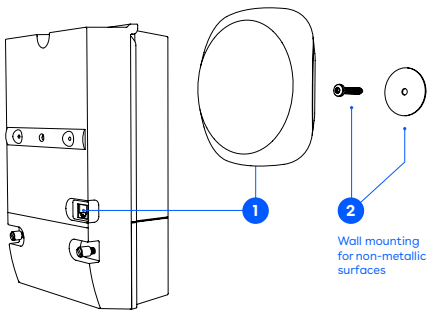
Hold the **front side** of the Equalizer over the light strip of the Easee charger and move it slowly downwards. When the charger lights green, the pairing is done!



2 Fuse box Connecting







1. Plug the Equalizer into a HAN port¹. After around 30 seconds, it should start flashing in white while connecting to your WiFi. Once connected, it is automatically added to the Eease app!
2. Place the magnetic backside of the Equalizer directly on a metallic surface. If a metallic surface is not available, fix the metallic disc with a screw on the wall and then snap the Equalizer to it.

ATTENTION! For better communication with the Eease charger, place the Equalizer outside of the fuse cabinet. When outdoors, it should be protected from the weather, e.g. inside the fuse box (see page 7).



¹In most cases the HAN port will be inactive - please contact your utility company to open it for 3rd party use.

What do the LED colors mean?

-  White, fast flashing - Booting
-  White, breathing every 10s - Normal operation
-  Red / white, switching - No WiFi added²
-  Red / blue, switching - No internet connection
-  Red, flashing - No data from power meter¹
-  Red, breathing every 10s - Error³



Touch the Easee logo in the middle to check power consumption:



Blue, fast flashing - High power consumption
Blue, slow flashing - Low power consumption

Count the flashes for percentage - 1 flash (10%),
2 flashes (20%), up to 10 flashes (100%)



Hold the Easee logo for 3 seconds to check connectivity. You will see 2 flashes:

1st flash - Easee link RF status
2nd flash - WiFi status



Green - Connected



Red - Not connected²

²Use the Easee App to set up the WiFi.

³Please go to <http://easee.support>.

Practical details

Charge faster

The Equalizer makes it possible to charge smarter, safer and faster if the installation is scaled accordingly. To enable it's true potential, the rated value of the chargers supply circuit fuse should be as high possible compared to the main fuse. Even in 1-phase setups we recommend using a 3-phase cable to future proof the installation.

Protection

The Equalizer is IP40. It has protection from objects larger than 1 mm, but no protection against water. Therefore, if the Equalizer should be placed outside of the house, it must be installed inside of the fuse box or any other place protected from the weather.

The operating temperature of the Equalizer ranges from -20 °C to +50 °C.

Disposal



This electronic equipment must not be disposed of in household waste. For the return of old devices, free collection and acceptance points may be available in your vicinity. Observe local regulations for correct and environmentally friendly disposal.

easee

Easee AS
Professor Olav Hanssens vei 7A
4021 Stavanger, Norway
Org.nr. 920 292 046
www.easee-international.com